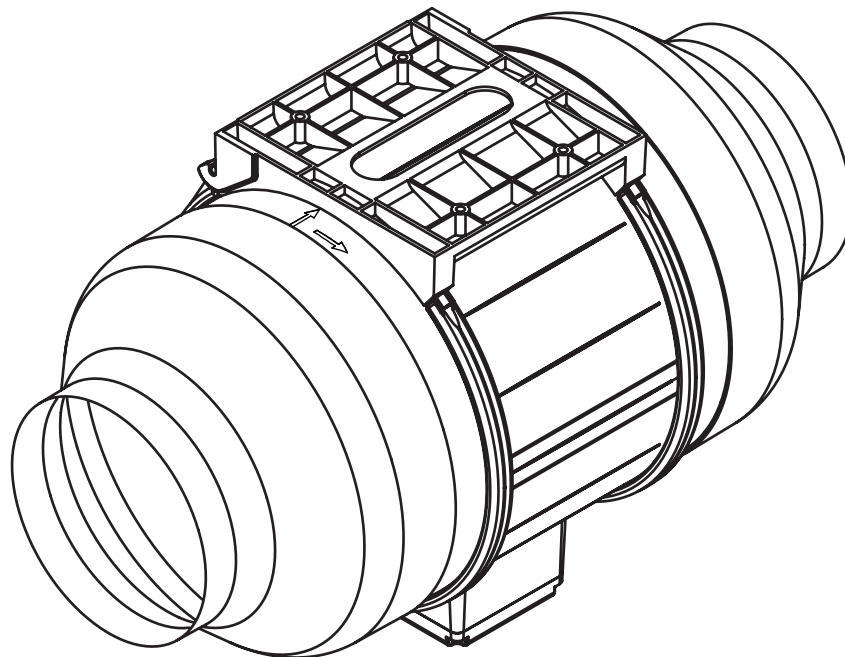


EN Installation instructions – ULI

BORA duct fan – EC



ULIUMEN-100

1 General information, safety information

1.1 Other applicable documents

There are other documents that apply and must be observed along with these operating and installation instructions. Observe all the documents relating to the BORA cooktop extractor, which are a component of the particular scope of delivery.

Directives

The device complies with the following EU directives:

2014/35/EU Low Voltage Directive
2014/30/EU EMC Directive
(EU) 640/2009 Electric Motors Ordinance
2011/65/EU RoHS Directive
2012/19/EU WEEE Directive

1.2 Use as intended

The device is intended for the removal of cooking vapours in combination with a BORA cooktop extractor in private households only. This device is not intended for:

- fitting in vehicles
- installation outdoors
- airing a room

BORA is not liable for damage caused by improper use or wrong operation.

All misuse is prohibited!

1.3 Safety instructions for installation and disassembly

Installation: the appliance may be installed and disassembled by qualified specialists only, who know and observe the customary regulations and additional regulations of the local utility company.

⚠ WARNING!

Danger of injury from a moving fan wheel!

If the fan wheel turns, there is risk of injury.

- ▶ Install the appliance in a tension-free condition exclusively.
- ▶ Before commissioning, connect the fan to both sides of the duct system.
- ▶ In the case of straight ducting and a distance < 900 mm between the fan and wall sleeve, a safety guard must be provided for (available as an accessory).

- ▶ Observe the maximum ambient temperature on the nameplate.

i For more detailed information on decommissioning, disassembly and disposal, please see the instructions provided with the cooktop extractor.

i BORA Holding GmbH, BORA Vertriebs GmbH & Co KG, BORA APAC Pty Ltd and BORA Lüftungstechnik GmbH are not liable for damage arising from non-compliance with the safety and warning information.

Installation instructions: Original Translation

The distribution and duplication of this document, as well as the use and disclosure of its contents are prohibited unless expressly authorised.



These operating and installation instructions have been drawn up with the greatest of care. But it cannot be ruled out that subsequent technical modifications have not yet been incorporated or the relevant content has not yet been adapted. Please accept our apologies in this eventuality. An updated version can be requested from the BORA Service Team. Subject to printing errors and mistakes.

© BORA Vertriebs GmbH & Co KG

All rights reserved.

D

BORA Lüftungstechnik GmbH
Rosenheimer Str. 33
83064 Raubling
Germany
T +49 (0) 8035 / 9840-0
F +49 (0) 8035 / 9840-300
info@bora.com
www.bora.com

A

BORA Vertriebs GmbH & Co KG
Innstraße 1
6342 Niederndorf
Austria
T +43 (0) 5373 / 62250-0
F +43 (0) 5373 / 62250-90
mail@bora.com
www.bora.com

INT

BORA Holding GmbH
Innstraße 1
6342 Niederndorf
Austria
T +43 (0) 5373 / 62250-0
F +43 (0) 5373 / 62250-90
mail@bora.com
www.bora.com

AU NZ

BORA APAC Pty Ltd
100 Victoria Road
Drummoyn NSW 2047
Australien
T +61 2 9719 2350
F +61 2 8076 3514
info@boraapac.com.au
www.bora-australia.com.au

5 Technical data / Device description

5.1 Technical data

Parameters	Value
Supply voltage	220 - 240 V
Frequency	50 Hz
Power consumption	304 W
Current consumption	2.1 A
Maximum ambient temperature	45°C
Maximum displacement volume	1129 m ³ /h
Maximum static pressure	770 Pa
Dimensions (WxDxH)	
with duct reducers	500 x 250 x 299 mm
without duct reducers	215 x 250 x 299 mm
Weight (incl. accessories/packaging)	6 kg
Housing material	Plastic
Duct dimensions	
with duct reducer	Ø 155 mm
without duct reducer	Ø 250 mm
Power supply cable	10 m
Control line	10 m

Tab. 5.2 Technical data

Device size (mm)

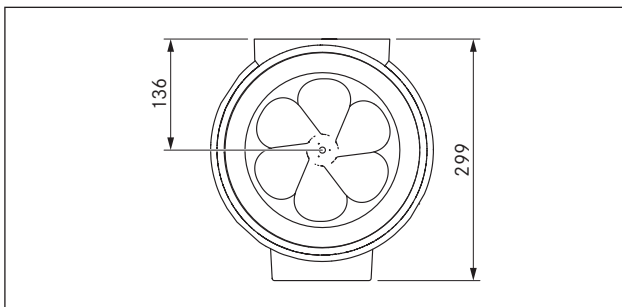


Fig. 5.1 Front view

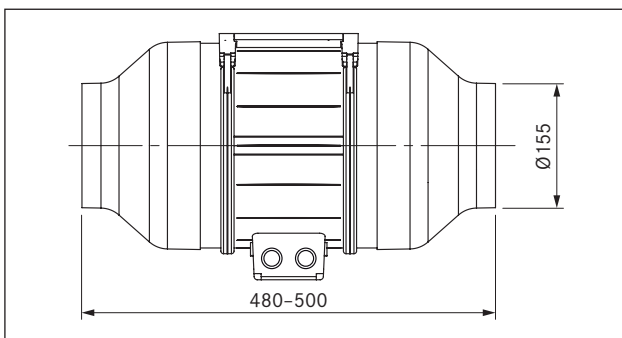


Fig. 5.2 Side view

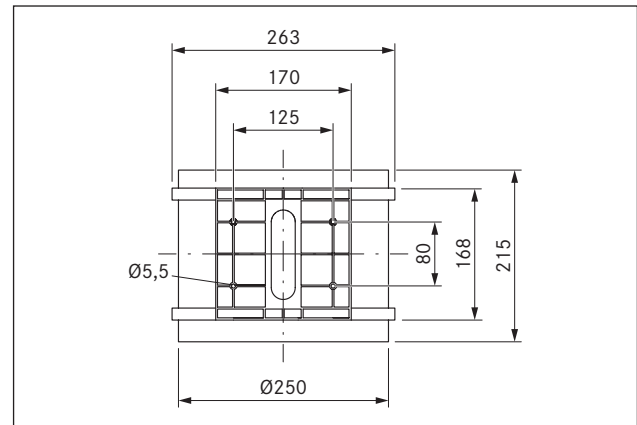


Fig. 5.3 Top view

5.2 Device description

- Installation in a round duct system with a diameter of 155 mm on average when using duct reducers.
- The junction box can be turned to the desired position.
- Installation mounting plate is built in.
- Fixing devices must be provided at the installation site.
- Not suitable for fitting in wooden furniture.
- For an exhaust channel of more than 6 m in length or high pressure drops, the duct fan must be supplemented by a universal fan module (ULIE).
- Take into account at least 3 m distance from the extractor opening and additionally a silencer.

Structure

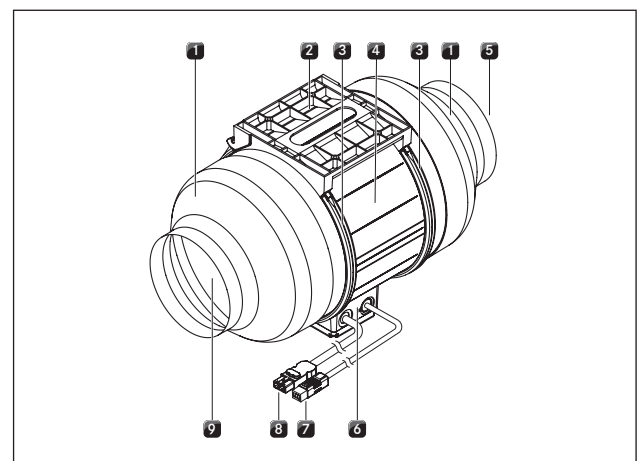


Fig. 5.1 Structure of duct fan

- [1] ULIRR duct reducer
- [2] Installation mounting plate
- [3] Retaining bracket
- [4] Fan unit
- [5] Air inlet
- [6] Junction box
- [7] Control line with connection plug, 10 m
- [8] Mains cable with connection plug, 10 m
- [9] Air outlet

5 Installation information

- ▶ Observe the safety and warning information in these operating and installation instructions, as well those of the BORA cooktop extractor (see section Safety).

5.1 Check scope of delivery

Name	Number
ULI duct fan	1
Installation information	1
Duct reducer Ø 250, 155 mm ULIRR	2
Split ferrite sleeve	2

Tab. 4.1 Scope of delivery

- ▶ Check the scope of delivery for completeness and damage
- ▶ Notify BORA customer services if parts of the delivery are missing or damaged.
- ▶ Do not install damaged parts under any circumstances.
- ▶ Remove the transport packaging properly.

5.2 Install duct fan

i The duct fan can be assembled anywhere.

- ▶ Observe all of the measures provided at the installation site to install the fan correctly and without any errors in consultation with all the trades concerned.
- ▶ If necessary, install a steam trap (not contained in the scope of delivery).

5.2.1 Installation

- ▶ Clean the floor of heavy soiling.
- ▶ Loosen the screws of both retaining brackets [3].
- ▶ Open the retaining brackets [3] and remove the duct fan [4].
- ▶ Install the mounting bracket [2].
- The mounting bracket must be mounted according to the structure of the building.
- ▶ Fix the duct reducer [1] to both sides of the duct fan [4].
- ▶ Put the duct fan [4] in the mounting bracket [2] according to the direction of the air stream.
- The air flow direction is specified by an arrow on the housing. Furthermore, when using the duct fan, the fan wheel must face the cooktop extractor.
- ▶ Observe the position of the junction box [6].
- ▶ Close and screw in the retaining brackets [3].
- ▶ Connect the duct fan [4] to the duct system.
- ▶ Ensure the duct system is not taut.
- ▶ Lay both connection cables [7] [8].

5.2.2 Connection to the BORA Ecotube duct system

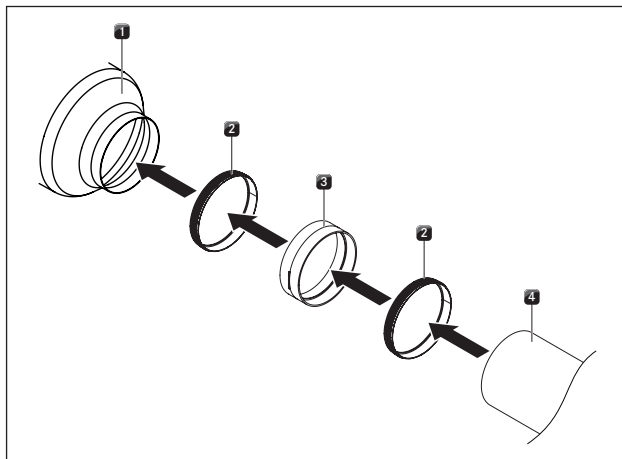


Fig. 4.1 Connection to BORA Ecotube duct system

- [1] ULIRR duct reducer
- [2] ERD seal (not contained in the scope of delivery)
- [3] ERV duct connection (not contained in the scope of delivery)
- [4] ER round duct (not contained in the scope of delivery)

- ▶ Join the fan to the Ecotube duct system as shown.

5.2.3 Connection to the control unit

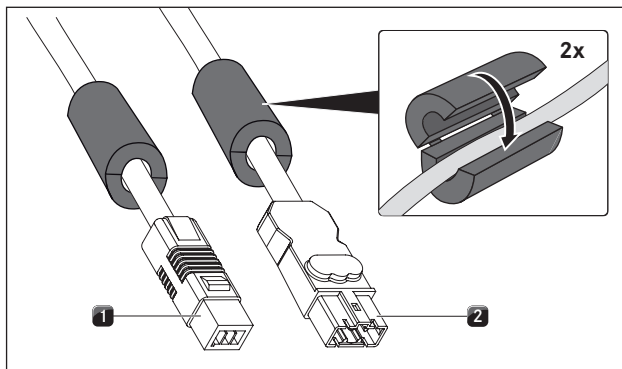


Fig. 4.2 Connection plug for the duct fan

- [1] Connection plug for the control line
- [2] Connection plug for the power supply cable

- ▶ Attach the split ferrites provided with the product to the fan's connection cables.
- ▶ Connect the control line [1] of the fan to the control unit of the cooktop extractor.
- ▶ Connect the power supply cable [2] of the fan to the control unit of the cooktop extractor.
- ▶ Check that the plugs and sockets fit snugly.
- ▶ Make sure the cable is not damaged.
- ▶ Check that the installation correct.